

AMP/EFI MS3PRO DIYAUTOTUNE

AMP EFI AXM-150 Single Coil Driver

The AXM-150 module accepts a logic level 0-5v square wave and outputs a high-current capable ground to directly control the negative side of an ignition coil.

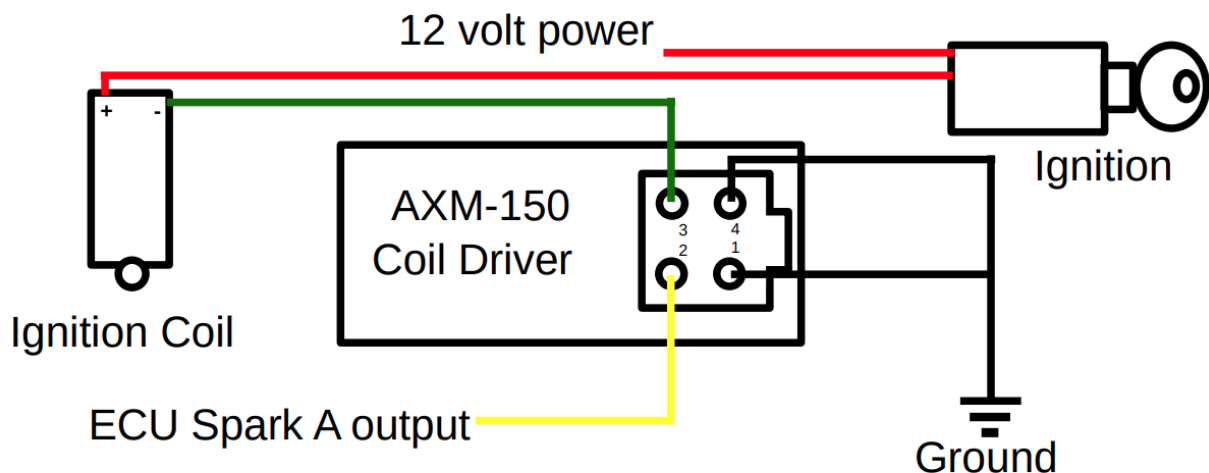
Connector

The AXM-150 coil driver uses an Amphenol AT connector, compatible with Deutsch DT and similar motorsports connectors. We include standard “closed barrel” terminals, which you can crimp with the same sort of tools you would use for Deutsch connectors or mil-spec terminals. Waytek Wire stock number 619 is a good budget option if you do not already have a suitable tool. Pin numbers are molded into the connector. Here is what each pin does, by number:

1. Engine ground (to cylinder head)
2. Logic-level (0-5v) ignition signal from ECU
3. Output to Coil Negative (-) terminal
4. Engine ground (to cylinder head)

Wiring diagram

NOTE: It is important that both ground wires from Pin 1 and Pin 4 are grounded TOGETHER to a good, solid engine ground (preferably either the engine block or cylinder head). Coil Positive (+) terminal should still be provided with power from the vehicle’s switched +12v ignition system.



AMP EFI
2405 Murphy Blvd.
Gainesville, GA 30504
support@ampefi.com